

7. 2 Graphing Polynomial Functions

Objective: Graph polynomial functions and locate their zeros
Find maxima & minima of polynomial functions

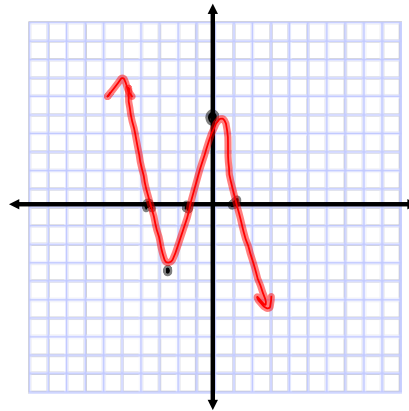
****Ignore book directions since we are using graphing calculators****

- A) Graph by making a table of values (≈ 6)
 - B) Find the zeros
 - C) Find maxima & Minima
- ** Find all info before Graphing**

*** SKIP # 22, 24, 26 ***

Ex1) $F(x) = -x^3 - 4x^2 + 5$

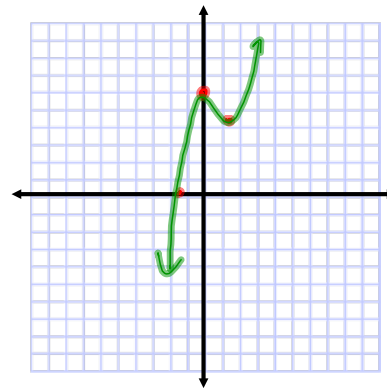
	x	y
min	-2.666	-4.481
max	0	5
zeros	-1	0
	-1.382	0
	-3.618	0



#14

Ex2) $f(x) = x^3 - 2x^2 + 6$

	x	y
min	1.333	4.815
max	0	6
zero	-1.340	0



To calculate mins/maxs
- go **2nd** **trace**

select Min or Max

#16 Optional

To calculate zeros
- go **2nd** **trace**
select zero

