

9-5 Classes of Functions

Objective: ID graphs as different types of functions
 ID equations as different types of functions

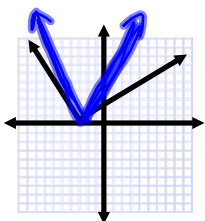
I. ID Graphs

- A) Go to page 499 and 500.
- B) Turn to page 501 and let us discuss #4-8.
- C) Examples



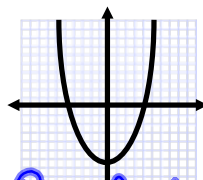
- 4. Step *for greatest integer*
- 5. Rational or Inverse
- 6. Constant
- 7. C
- 8. b

Ex 1)



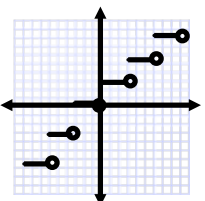
Absolute Value

Ex 2)



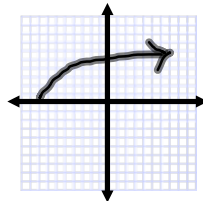
Quadratic

Ex 3)



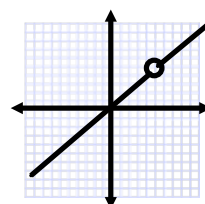
Step

Ex 4)



Square root

Ex 5)



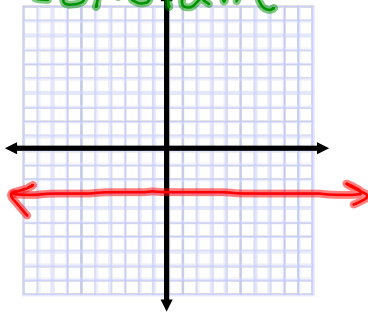
Rational

II. Identify the equation and then graph.

Ex 6) $y = -3$

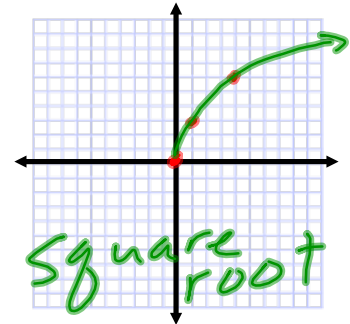
constant

x	y
0	-3
1	-3
2	-3



Ex 7) $y = \sqrt{9x}$

x	y
0	0
1	3
4	6



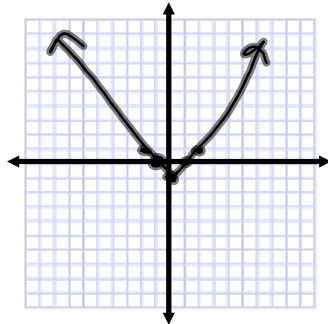
Absolute Value

What integer is less than or equal to x?

Step or Greatest integer

Ex 8) $y = |x| - 1$

x	y
0	-1
1	0
-1	0
2	1
-2	1



Ex 8) $y = 2 \lfloor x \rfloor$

x	y
0	0
.5	0
.75	0
1	2
1.5	2
2	4

