

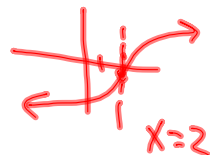
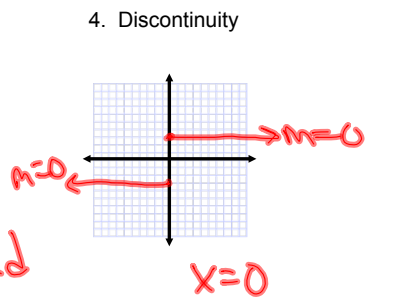
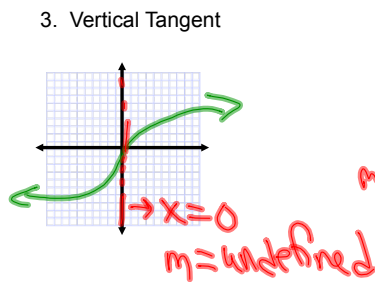
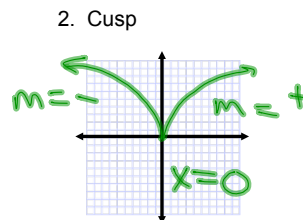
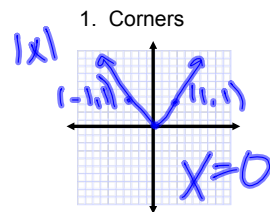
**3.2 Differentiability**

- \*Are you able to find a derivative?
- \*Is there a derivative?
- \*Can you find the slope at the point?
- \*Is there a tangent line?

Yes = Differentiable

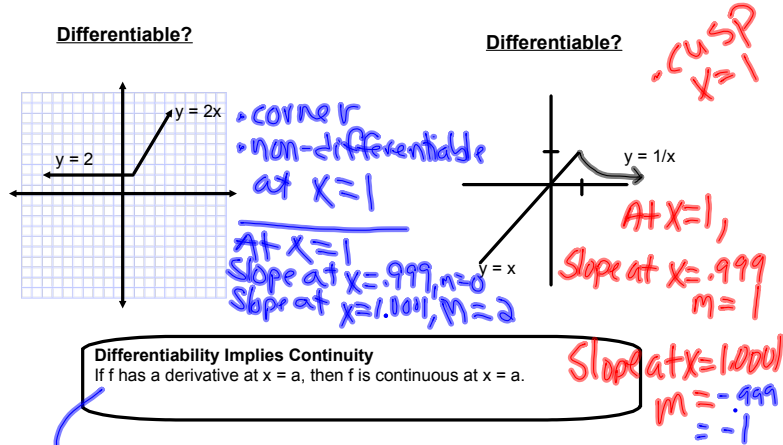
P.110

There are 4 types of non-differentiability:



**Differentiable**

1. Continuous
2. Left-hand and Right-hand derivatives (slopes) must be equal.



Is the opposite true?  
 If continuous, then differentiable?  
 No!  
 ex)  $|x| = y$