

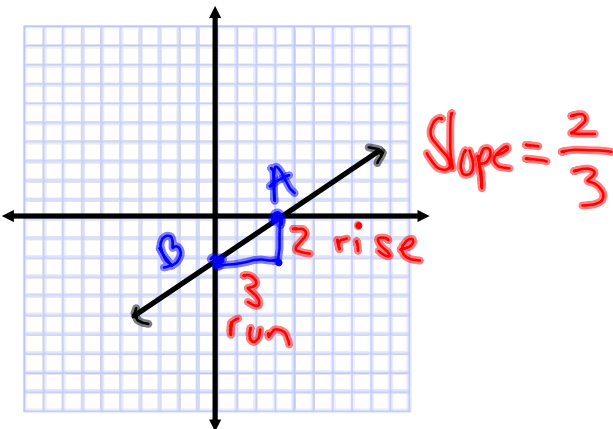
Algebra Slope Day 1

Warm-Up

Slope =  $\frac{\text{rise}}{\text{run}}$

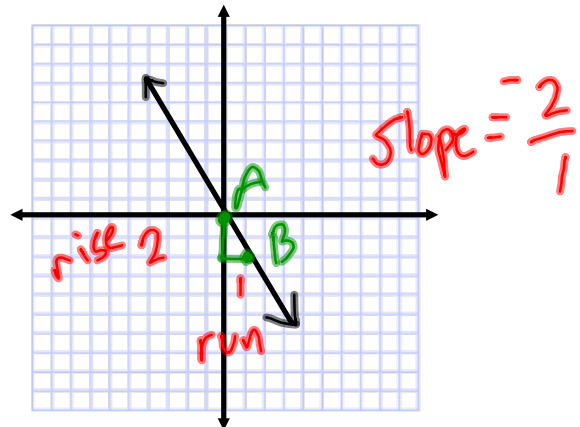
Directions

1. Find 2 points on the line that have whole numbers as their coordinates.
2. Label your points A & B.
3. Draw a path from point A to point B.



1. How did you get from point A to B?

down 2, left 3



2. How did you get from point A to B?

down 2, right 1

**iPad Activity: Sketchpad Explorer**

**Fill in the blank.**

1. In order to find slope, create a right \_\_\_\_\_ that connects the two \_\_\_\_\_. The slope is the \_\_\_\_\_ of \_\_\_\_\_ to \_\_\_\_\_.

2. Does the slope of a line change depending on the points you use? \_\_\_\_\_

1. Why or why not?

\_\_\_\_\_

\_\_\_\_\_

3. What type of line has a slope of 0? \_\_\_\_\_

4. In your own words, explain what slope is. Use an example to support your answer.

\_\_\_\_\_

\_\_\_\_\_

\_\_\_\_\_

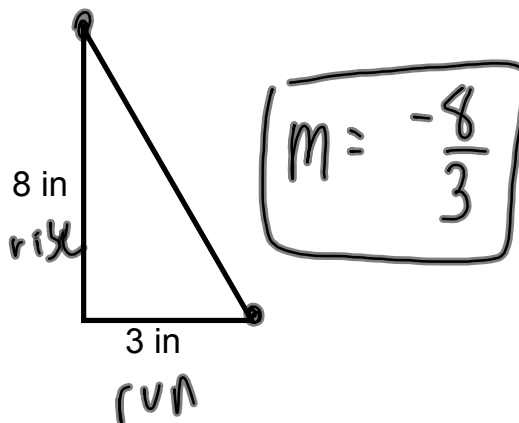
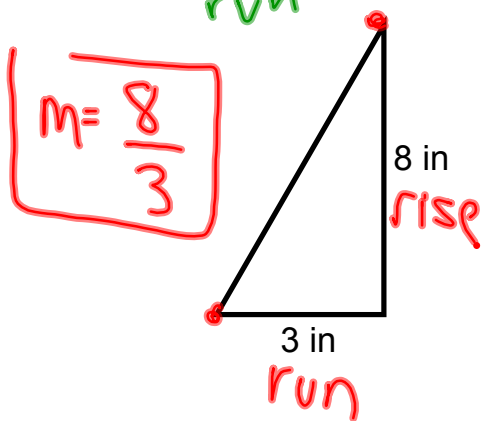
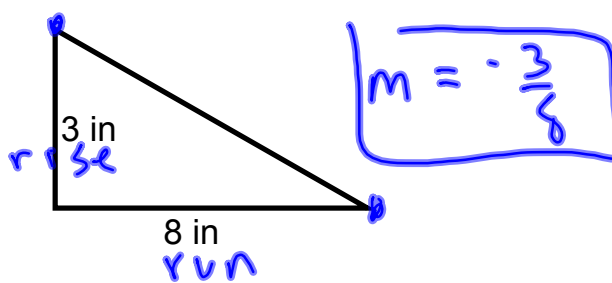
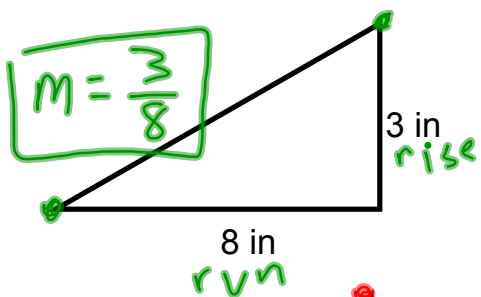
—

Examples

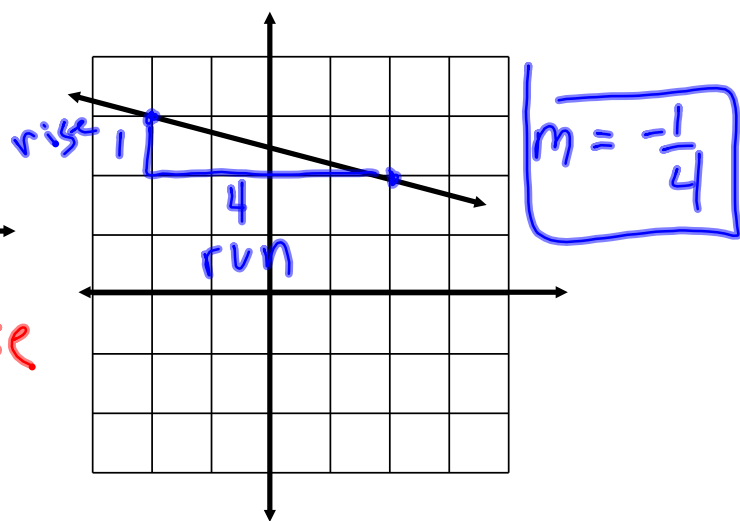
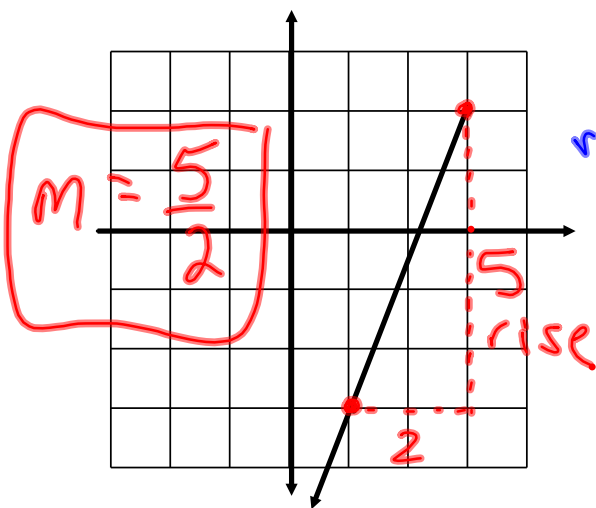
$$\text{Slope} = m = \frac{\text{rise}}{\text{run}}$$



Find the slope of each ramp.

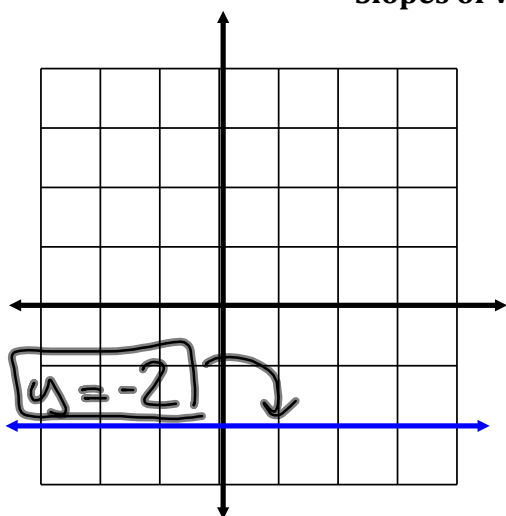


Find the slope of each line.

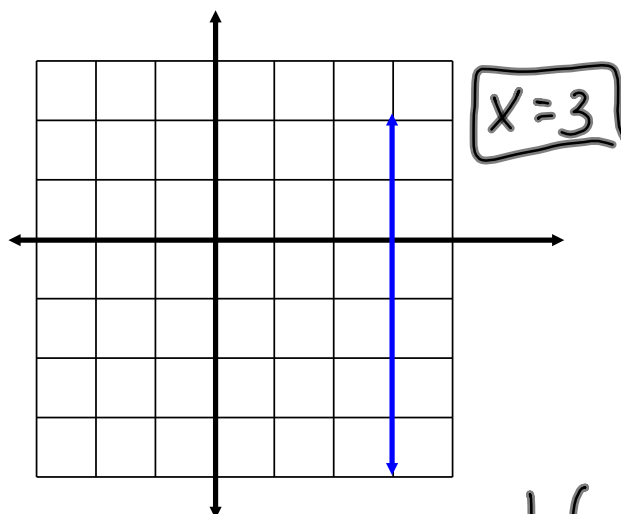


\*Find 2 points first!

### Slopes of Vertical/Horizontal Lines



Slope of Horizontal Lines = 0  
 $m = 0$



Slope of Vertical Lines = undefined  
 $m = \text{undefined}$

Assign  
Slope Day 1 Wkst

Vocab	Definition	Example
Slope	<ul style="list-style-type: none"> <li>• Represented by <u>m</u></li> <li>• <u>Steepness of a line</u></li> <li>• <math>\frac{\text{rise}}{\text{run}}</math></li> <li>• _____</li> <li>• _____</li> </ul>	<ul style="list-style-type: none"> <li>• Ski ramps</li> <li>• roof</li> <li>• Hills</li> <li>• Skateboard ramp</li> <li>• ramps</li> </ul>