

1.) Find x

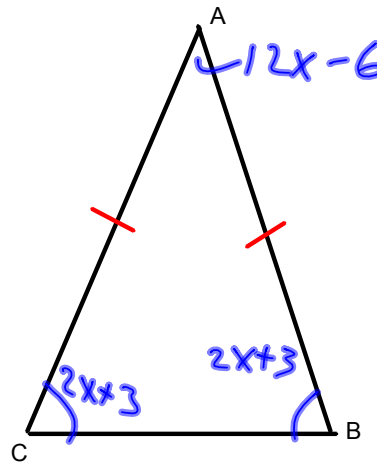
m angle A =  $12x - 6$

m angle B =  $2x + 3$

$$2x + 3 + 2x + 3 + 12x - 6 = 180$$

$$\frac{16x}{16} = \frac{180}{16}$$

$$x = 11.25$$



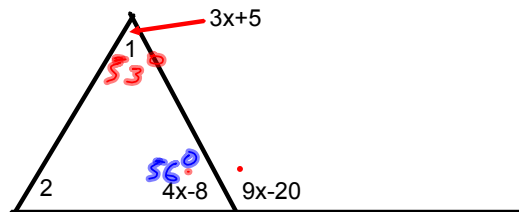
2.) Find x, m angle 1, and m angle 2

$$4x - 8 + 9x - 20 = 180$$

$$13x - 28 = 180$$

$$\frac{13x}{13} = \frac{208}{13}$$

$$x = 16$$



$$m\angle 1 = 3(16) + 5$$

$$= 48 + 5$$

$$m\angle 1 = 53^\circ$$

$$4(16) - 8 = 56$$

$$\begin{array}{r} 53 \\ + 56 \\ \hline 109 \end{array} \quad \begin{array}{r} 180 \\ - 109 \\ \hline 71 \end{array}$$

$$m\angle 2 = 71^\circ$$

3.) Find measure of angles 1, 2, and 3

$$m\angle 1 = 180 - 60$$

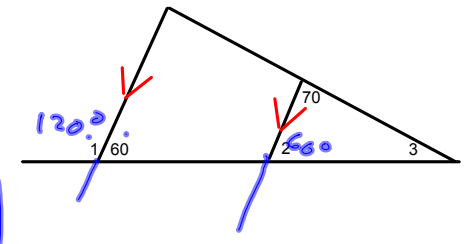
$$m\angle 1 = 120^\circ$$

$$m\angle 2 = 60^\circ$$

corresponding angles

$$\begin{array}{r} 70 \\ + 60 \\ \hline 130 \end{array}$$

$$\begin{array}{r} 180 \\ - 130 \\ \hline 50 \end{array}$$



$$m\angle 3 = 50^\circ$$