

Solutions to chapter 1 review game(pre-calculus)

1.) $y = 2x - 3$

2.) $[1.5, \infty)$

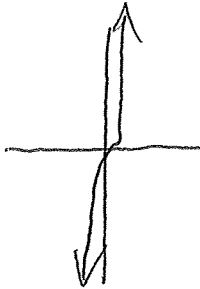
3.) $D: (-\infty, \infty)$
 $R: [0, \infty)$

4.) increasing: $(-\infty, 3)$ and $(6, \infty)$

decreasing: $(3, 6)$

5.) Horizontal shift 6 units to the right and a vertical shift 9 units up

6.) $g(x) = 4x^3$



7.) $(f \circ g)(x) = -3x^2 + 10$

$(g \circ f)(x) = 9x^2 - 24x + 14$

8.) $f^{-1}(x) = \sqrt[3]{x-6} + 4$

9.) relative minimum: (1,5)

